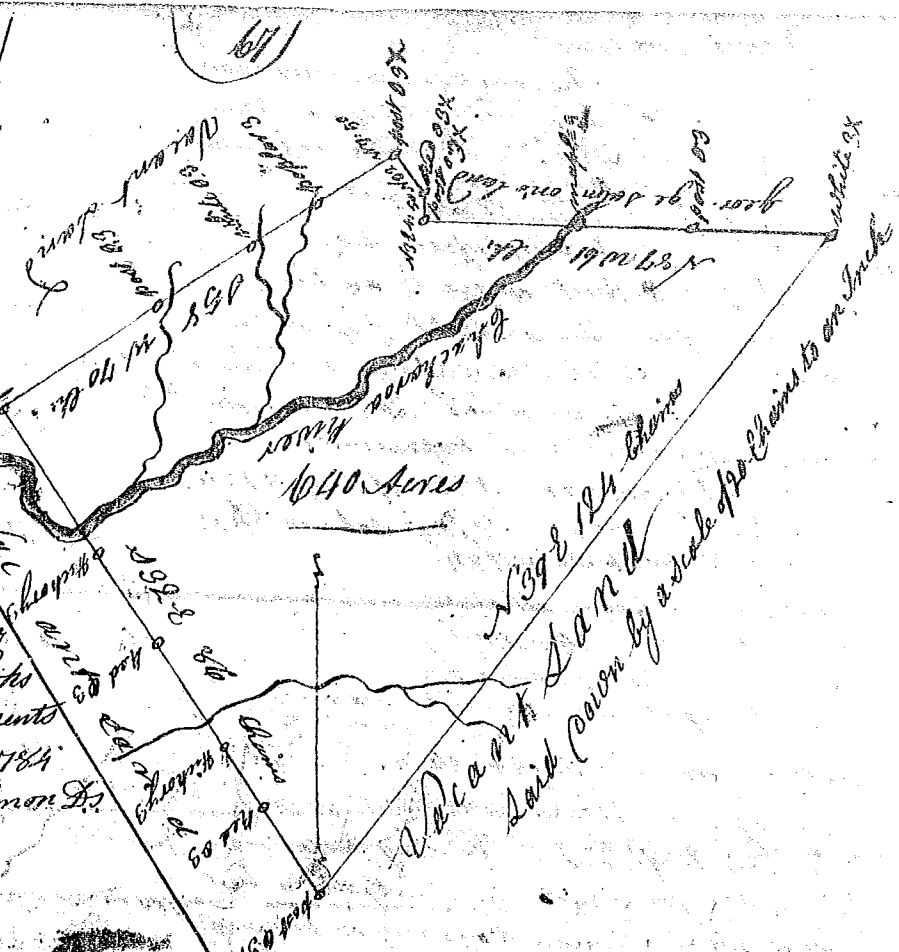


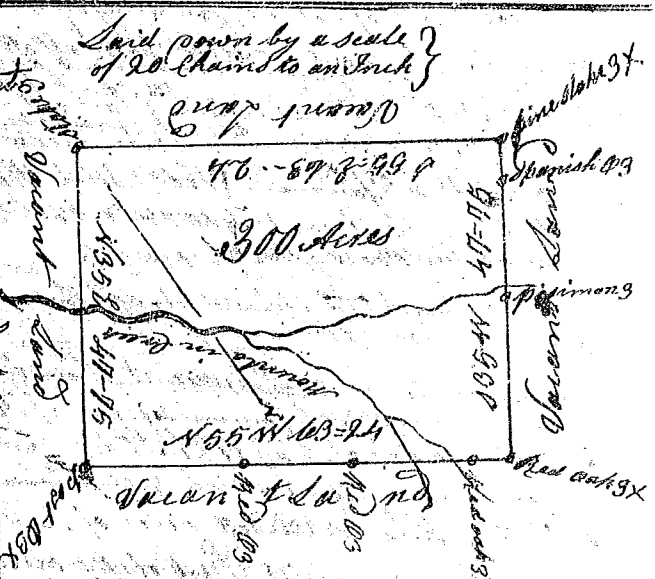
State of South Carolina

Pursuant to a warrant from John Thomas Esq. Commissioner of Locations dated May 21st 1784 I have measured and laid out unto John Jackson a tract of Land containing six hundred and forty acres situate in nine^{ty} six district west of the ancient Boundary on both sides of Checkers River of Saluda River Bounding North and East laid out to George Salmon all other sides on Vacant Land & hath such form and marks as the above plat represents
 Surveyed 22 May 1784
 George Salmon D.S.
 Recorded 31 July 1784



State of South Carolina

Pursuant to a warrant from John Thomas Esq. Commissioner of Locations dated May the 21st 1784 I have measured and laid out unto Jacob Vance a tract of Land containing three hundred acres, situate in Ninety six district west of the old Indian Boundary line on both sides of Mountain Creek of Saluda River; Bounded on all sides on Vacant Land, and hath such form and marks as the above plat represents
 Surveyed 27 of May 1784
 George Salmon D.S.
 Recorded 31 July 1784



State of South Carolina

Pursuant to a Warrant from John Thomas Esq. Commissioner of Locations dated May 22nd 1784 I have measured and laid out unto George Lewis a tract of Land containing one thousand and fifty acres situate in Ninety six district west of the old Indian Boundary on both sides of the beaver dam Creek of Sygar River Bounded N on Land laid out for Thomas Benson, all other sides on Vacant Land, and hath such form and marks as the above plat represents.
 Surveyed the 21st day of June 1784
 George Salmon D.S.
 Recorded the 2nd day of August 1784

